

# FISHWAY STATUS REPORT

Date: 2/13/2012

Inspection Period: 2/5 - 2/11/2012

## THE DALLES DAM



**US Army Corps  
of Engineers**  
Portland District

The Dalles Project-Fisheries  
P.O. Box 564  
The Dalles, OR 97058-9998  
Phone: 541-506-3800

Fishways are inspected once daily.

The Dalles Dam	Inspections	Criteria	Total Number of Inspections:	7	Temperature:	N/A	F
	Out of Criteria	Limit	Comments	Secchi:	6.0	Ft.	
<b>NORTH FISHWAY</b>			North fish ladder OOS for annual maintenance Feb 1 to Feb 23.				
Exit differential		≤ 0.5'					
Count station differential		≤ 0.3'					
Weir crest depth		1.0' ± 0.1'					
Entrance differential		1.0' - 2.0'	Average: N/A				
Entrance weir N1		depth (≥ 8')	Average: N/A				
Entrance weir N2		Closed					
PUD Intake differential		≤ 0.5'					
<b>EAST FISHWAY</b>			East Fish Ladder returned to service on Feb 1.				
Exit differential	0	≤ 0.5'					
Removable weirs 154-157	0	Per forebay	Auto adjusts 1' increments.				
Weir 158-159 differential	0	1.0' ± 0.1'					
Count station differential	0	≤ 0.3'					
Weir crest depth	0	1.0' ± 0.1'					
Junction pool weir JP6	0	depth (≥ 7')	Manually adjusted as needed.				
East entrance differential	1	1.0' - 2.0'	Average	1.4	Out at 0.8'; see <b>AVGS</b> tab.		
Entrance weir E1	0	No criteria	Average	3.6	Manually adjusted to maintain east ent. differential.		
Entrance weir E2	0	depth (≥ 8')	Average	11.3			
Entrance weir E3	0	depth (≥ 8')	Average	11.1			
Collection channel velocity	0	1.5 - 4 fps	Average	N/A	Velocities will resume Mar 1.		
West entrance differential	0	1.0' - 2.0'	Average	1.5			
Entrance weir W1	0	depth (≥ 8')	Average	9.3			
Entrance weir W2	0	depth (≥ 8')	Average	9.3			
Entrance weir W3	0	No criteria	Average	Closed			
South entrance differential	0	1.0' - 2.0'	Average	1.3	Daily differentials & weir depths, see <b>AVGS</b> tab.		
Entrance weir S1	0	depth (≥ 8')	Average	8.4			
Entrance weir S2	0	depth (≥ 8')	Average	8.4			
<b>JUVENILE PASSAGE</b>							
Sluiceway operation		units 1,8,18	Ice Trash Sluiceway end gates closed Dec 15, 2011.				
Turbine trashrack drawdown		<1.5', wkly					
Spill volume		40%, 24hr	On seal				
Spill Pattern		per FPP	On seal				
Turbine Unit Priority		per FPP					
Turbine 1% Efficiency		per FPP					

**OTHER ISSUES:****THE DALLES****Birds:**

Fisheries personnel have observed declining numbers of cormorants, grebes, eagles and gulls around the project. See bird tab below for information. Eagle observation data collection continues through March for information to help determine interaction with avian lines. Reduced hazing program from 2 boat shifts to 1 shore based shift due to budget constraints approved by FPOM. Project fisheries to meet with Fish Field Unit next week to determine viable contingency plan and trigger to determine when to apply.

**Operations:**

The east fishladder returned to full operation Feb 1. The north fish ladder remains dewatered for annual maintenance Feb 1 to Feb 28. Ice trash sluiceway end gates closed Dec 15, 2011. Planned spillway outage 0600 hrs. Feb 17 through 1000 hrs. Feb 19 for Pacific Northwest National Laboratory (PNNL) for 4 trolley pipe removal. Planned four unit rolling outages Feb 20 through Feb 21 for PNNL hydrophone repair on 4 trolley pipes. Fisheries will continue one daily fishway inspection through the end of Feb., then twice daily inspections as per Fish Passage Plan (FPP).

**Maintenance:**

The north ladder winter maintenance includes: preventive maintenance of count station and exit weirs (TDM, TDE), brush removal (TDF), check count station grating clips (TDS), count station access and storage hooks (TDS), and count station window brush bushing (TDM). The north ladder entrance inspection of the diffuser grating will be ROV'd (TDF) Feb 15. The east fishway west entrances will be powering off through Feb 20 for electrical upgrades. Entrance conditions will be monitored.

**Studies:**

East fishway backup water supply PDT study continues. Project fisheries and engineering supporting as needed. Adult PIT antennae PDT continues. Project fisheries and engineering supporting as needed.

**Research:**

Beginning coordination for USFWS lamprey video monitoring at count stations. Beginning coordination for WDFW fish count season. Video counting to start Mar 1. Normal counting starts Apr 1. ODFW and WDFW dam angling planned for 2012, but no coordination to date. PNNL JSAT coordination for second summer of performance testing. Dive repair planned for spillway and powerhouse next week. Tribal cul de sac strugeon broodstock capture planned, but no coordination to date. Tribal lamprey trapping at count station planned, but no coordination to date.

Approved by;  
Ron D. Twiner  
Operation Project Manager  
The Dalles Dam

# The Dalles Dam Maximum Daily Bird Observations

Washington Shore

SW-T1: one bald eagle roosting.

SW-T3: ten to 38 cormorants resting on rocks. one cormorant and one great blue heron active.

SW-T4: no birds.

FB1: one bald eagle roosting on electrical towers, three cormorants resting on boom, one cormorant active, and one gull resting on rocks.

SW-T2: no birds.

PH-T1: two grebes active.

PH-T2: no birds.

PH-T3: one to two bald eagles roosting and one to two great blue herons roosting at Westrick park.

Oregon Shore

Temp:		SUN	6.0
		MON	6.0
		TUES	6.0
		WED	6.0
		THUR	6.0
		FRI	6.0
		SAT	6.0
AVG:	N/A	AVG:	6.0

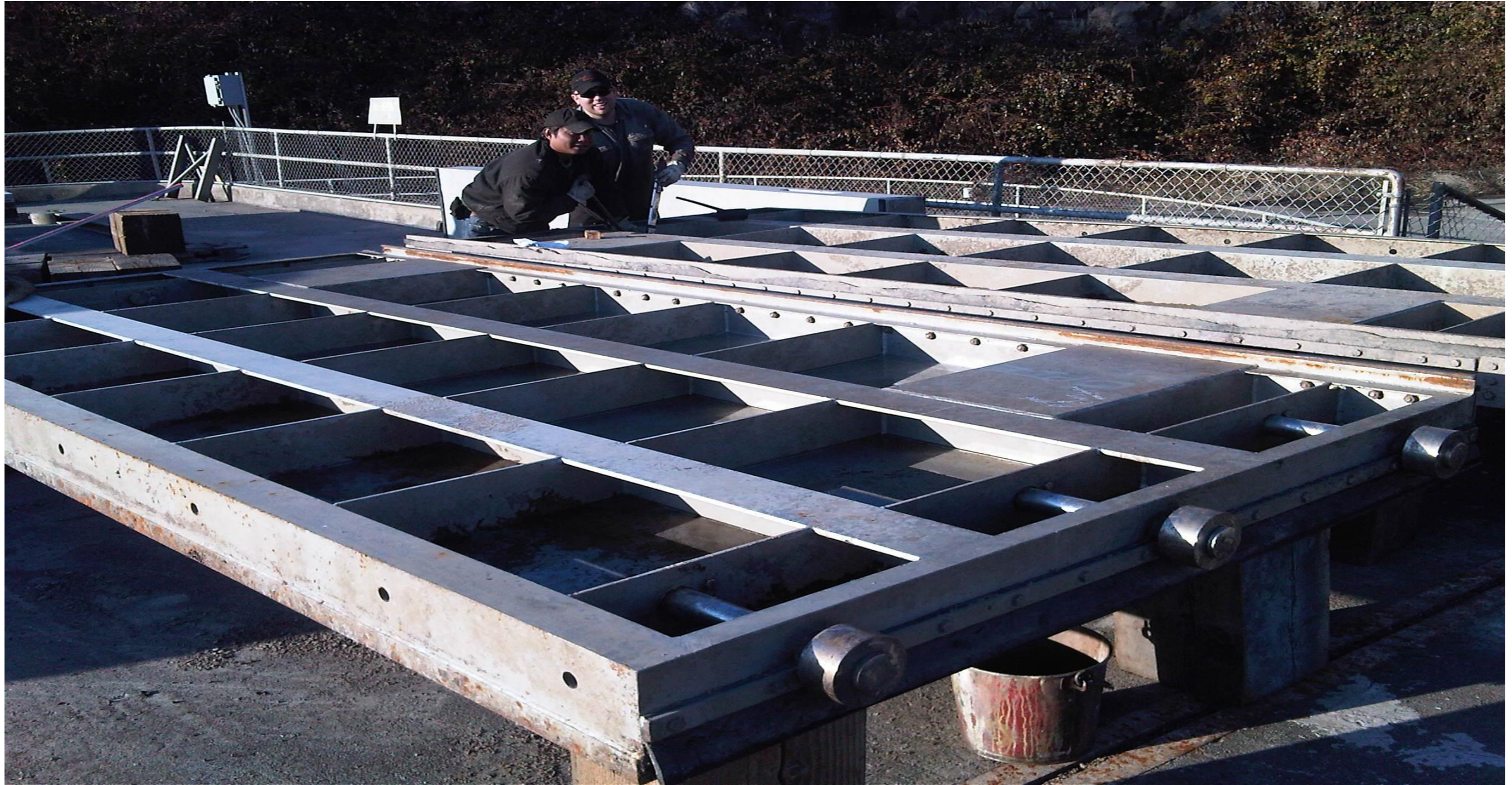
The Dalles Dam Daily Readings and Averages for  
Temperatures, Secchi, Entrances, and Spill

North Fish Ladder			East Fish Ladder													
<b>North Entrance</b>			<b>East Entrance</b>					<b>West Entrance</b>				<b>South Entrance</b>			% Spill	
Date:	Differential	N1 Depth	Differential	E1Depth	E2 Depth	E3 Depth	JP 6	Differential	W1Depth	W2 Depth	W3 Depth	Differential	S1 Depth	S2 Depth		
2/5/12			1.4	1.9	11.6	11.1	9.4	1.2	8.6	8.6		1.3	8.1	8.1	On seal	
2/6/12			1.3	2.0	11.9	11.4	9.7	1.5	8.7	8.7		1.2	8.5	8.5		
2/7/12			0.8	2.1	13.9	13.4	11.7	1.7	10.0	10.0		1.1	9.0	9.0		
2/8/12			1.8	4.0	10.5	10.4	10.1	1.6	9.3	9.3		1.2	8.9	8.9		
2/9/12			1.6	5.0	10.5	10.5	10.2	1.6	8.8	8.8		1.3	8.3	8.3		
2/10/12			1.5	5.0	10.6	10.6	9.4	1.7	8.3	8.3		1.3	8.2	8.1		
2/11/12			1.7	4.9	10.4	10.5	11.1	1.0	11.4	11.4		1.5	8.1	8.1		
<b>AVG:</b>	#DIV/0!	#DIV/0!	1.4	3.6	11.3	11.1	10.2	1.5	9.3	9.3	Closed	1.3	8.4	8.4		On seal

Dewatered

On seal

Third fish way inspection for east fish ladder, east, west, and south entrances completed via automation system in fisheries office.



North entrance weir N1 removed for wheel repair. Several of the wheels were seized.